



Narromine Waste Management Facility Pollution Incident Response Management Plan

Please address all correspondence to the General Manager

P O Box 115 Narromine NSW 2821

T: 02 6889 9999 F: 02 6889 9998

E: mail@narromine.nsw.gov.au

W: www.narromine.nsw.gov.au

Office Address: 124 Dandaloo Street Narromine NSW 2821

ABN 99 352 328 405

Document history and version updates

Version number	Date	Author	Reviewed by	Details of change
1.0	June 2023			
2.0	June 2024	A Woods	M Slimming	General update & format change. Evacuation maps added and Fire emergency response plan attached

Table of contents

Document history and version updates	1
Table of contents	2
1.0 PURPOSE.....	3
2.0 POLLUTION INCIDENT CLASSIFICATION, RISK ASSESSMENT, AND CONTRIBUTING FACTORS	4
Emergency box	5
Fire Actions:	5
3.0 DOCUMENT A – POLLUTION INCIDENT DECISION FLOW CHART	6
4.0 DOCUMENT B – POLLUTION INCIDENT EMERGENCY CONTACT DETAILS	7
4.1 DEFINITION OF POLLUTION INCIDENT	7
4.2 NOTIFICATION OF POLLUTION INCIDENT	7
4.2.1 Notification Speed of Response	7
4.2.2 Notification of Relevant Authorities.....	8
APPENDICES.....	13
Appendix 1: Detailed map of Narromine Waste Management facility.....	13
Appendix 2: Map containing neighbours contact details.....	14

Tables

Table 2.1 – Pollution incident Classification, Risk assessment and Contributing Factors

1.0 PURPOSE

Narromine Shire Council ("Council") has prepared a Pollution Incident Response Management Plan (PIRMP) for Narromine Waste Management Facility, located on Gainsborough Road Narromine. The environment protection licence (EPL) for this site is 6055.

The PIRMP contains details of site specific actions that Council have or will, (when required as a result of an incident), put in place to improve the way pollution incidents are reported, managed and communicated to the general community.

These actions meet the environmental requirements introduced by the Protection of the Environment Legislation Amendment Act 2011 and the Protection of the Environment Operations (General) Amendment (Pollution Incident Response Management Plan) Regulation, 2012.

The objectives of the PIRMP are to:

- Ensure that effective communication channels are in place to inform relevant authorities and the community (if required) of a notifiable incident.
- Control and minimise the impact of an incident using the Pollution Incident Response Management Plan (PIRMP)
- Review, update and test the PIRMP by carrying out exercises at prescribed intervals.

2.0 POLLUTION INCIDENT CLASSIFICATION, RISK ASSESSMENT, AND CONTRIBUTING FACTORS

Table 2.1 – Pollution Incident Classification, Risk Assessment and Contributing Factors

Description of Pollution Incident	Likelihood	Impact	Contributing Factors
Identifying non-domestic quantities (more than 200 millimetres per tonne or 200 grams per tonne) of hazardous substances among waste	Medium	Low	Human errors made during waste screening
Surface or subsurface fires at active landfill, public receival areas & recycling facility	Medium	Medium	High winds, dry weather, prolonged high temps and low humidity. Human errors made during waste screening, poor maintenance of plant and equipment, spontaneous combustion, hot embers in waste deliveries.
Surface or subsurface fires at maintenance and inactive areas	Low	High	High winds, dry weather, prolonged high temps, low humidity and spontaneous combustion.
Mixing of leachate and stormwater or waste and stormwater	Low	Medium	Prolonged periods of heavy rain, & lack of surface water pond and site maintenance.
Identification of any failure of an environmental protection system	Low	Low	Prolonged periods of heavy rain and/or a mechanical failure of the pump at the leachate pond.
Identification of a significant difference in groundwater indicator parameters	Low	Low	Prolonged periods of heavy rain
Confirmation of subsurface gas migration in a perimeter gas well at greater than 1.25 per cent methane (volume for volume)	Low	Low	n/a
Confirmation of surface gas at the landfill at greater than 1.25 per cent methane (volume for volume)	Low	Low	n/a

Confirmation of gas accumulated in buildings at greater than 1.25 per cent methane (volume for volume)	Low	Low	On-site buildings which have not been designed to prevent accumulation of methane gas.
Description of Pollution Incident	Likelihood	Impact	Contributing Factors
Any other incident or observation Low That could potentially pose an immediate environmental hazard outside normal operating conditions		Low	n/a
Acts of vandalism or target of terrorist activity	Low	Medium	Increased risk during hours of closure

Emergency box

In the event of an emergency, retrieve emergency box (location specified in appendix 1) which contains:

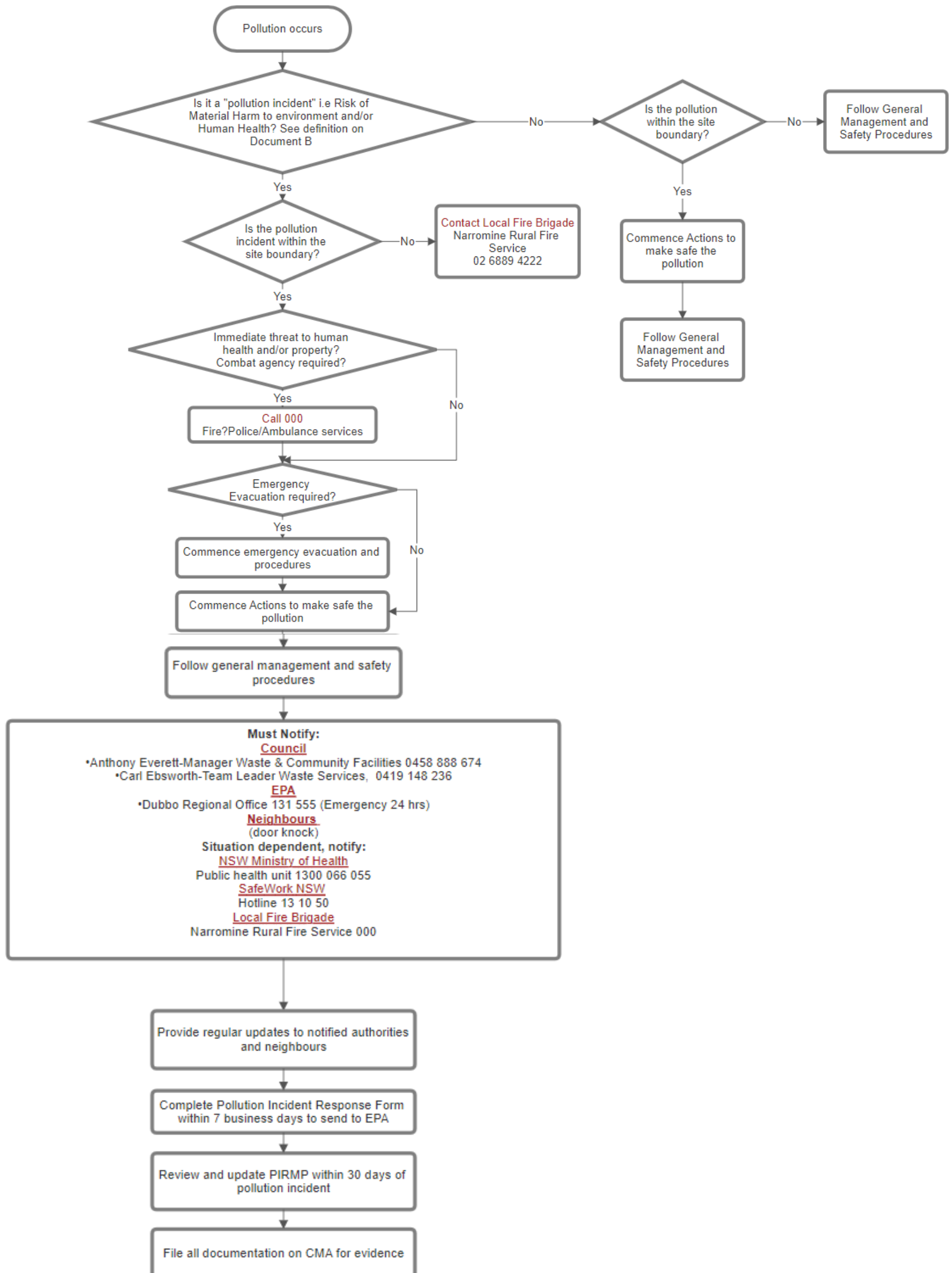
- Procedures
- Respirators
- Eye protection/ Full mask

Fire Actions:

In the event of a fire:

1. Call 000
2. Notify management
Call management on 6899 9999
3. Ensure you have PPE including:
 - Mask/respirator
 - Long pants
 - High visibility
4. Meet emergency services at gate to provide directions
5. Support RFS as directed.

3.0 DOCUMENT A – POLLUTION INCIDENT DECISION FLOW CHART



4.0 DOCUMENT B – POLLUTION INCIDENT EMERGENCY CONTACT DETAILS

4.1 DEFINITION OF POLLUTION INCIDENT

A pollution event is classified as a reportable incident if there is a risk of 'material harm to the environment', which is defined in section 147 of the Protection Of the Environment Operations Act 1997 (POEO):

“(a) harm to the environment is material if:

- i. it involves actual or potential harm to the health or safety of human beings or to ecosystems that is not trivial, or*
- ii. it results in actual or potential loss or property damage of an amount, or amounts in aggregate, exceeding \$10,000, and*

(b) loss includes the reasonable costs and expenses that would be incurred in taking all reasonable and practicable measures to prevent, mitigate or make good harm to the environment.”

4.2 NOTIFICATION OF POLLUTION INCIDENT

4.2.1 Notification Speed of Response

The EPA requires a swift and efficient response to minimize environmental harm. They emphasize quick action to contain the pollution source, prevent further contamination, and mitigate any impacts on human health and the environment.

In New South Wales (NSW), the EPA (Environmental Protection Authority) considers prompt notification of a pollution incident crucial for effective environmental management and response. While specific notification periods can vary depending on the circumstances of the incident, the EPA generally requires notification as soon as practicable after becoming aware of the incident.

Key points regarding notification of a pollution incident to the EPA in NSW typically include:

Immediate Notification: Immediate notification is required if the incident poses an immediate threat to human health, property, or the environment. This ensures that emergency response measures can be implemented promptly.

Timely Reporting: For less urgent incidents that still have the potential to harm the environment or human health, notification should be made as soon as possible after the incident is detected. This allows the EPA to assess the situation and determine appropriate actions to minimize impacts.

4.2.2 Notification of Relevant Authorities

Where the pollution incident causes or threatens material harm to the environment or human health, all the following authorities must be notified by the Narromine Landfill Supervisor, or the person acting in this position.

1. Emergency Call Services

- **Emergency Hotline Number (24 hours)** **000***

*The Narromine Landfill Supervisor should call 000 if the incident presents an immediate threat to human health and/or property and a combat agency is required (i.e. NSW Fire and Rescue, NSW Ambulance Service, NSW Police Force) and then notify all other parties below including NSW Fire and Rescue via a local telephone number.

2. Narromine Shire Council

- Anthony Everett, Manager Waste & Community Facilities, NSC 0458 888 674
- Carl Ebsworth, Team Leader Waste Services, NSC 0419 148 236
- Melanie Slimming, Director Infrastructure & Engineering Services, NSC 0408 349 301

3. The Environment Protection Authority (EPA)

- Dubbo Regional Office 02 6883 5330
- Emergency Hotline Number (24 hours) 131 555

4. NSW Ministry of Health (via Public Health Units)

- Dubbo Regional Office 02 6841 2260
- Public Health Officer On Call (24 hours) 0418 866 397

5. SafeWork NSW

- Hotline Number 131 050

6. Fire and Rescue NSW

- Dubbo Rural Fire Service 02 6881 3900

If there is no immediate threat to human health and/or property i.e. a combat agency is not required, then the Narromine Landfill Supervisor is still required to follow that outlined above except for dialing 000.

5.0 COMMUNICATING WITH NEIGHBOURS AND THE COMMUNITY

In the event of any incident the immediate neighbours must be notified. Contact details are supplied in appendix 2.

Other notification that is encourage is:

- Telephone calls or door knocking (where appropriate);
- Local media sources and media releases; and
- Council webpage and social media updates

6.0 POLLUTION INCIDENT REPORTING FORM

INCIDENT NO:	TIME:						
DATE:	DURATION OF INCIDENT:						
<p>NATURE OF INCIDENT:</p> <p>.....</p> <p>.....</p> <p>.....</p> <p>.....</p>							
<table style="width: 100%; border: none;"> <tr> <td style="width: 50%;">TEMPERATURE oC</td> <td style="width: 50%;">WIND DIRECTION/SPEED KM/HR</td> </tr> <tr> <td>RELATIVE HUMIDITY %</td> <td>RAINFALL SINCE 9AM MM</td> </tr> <tr> <td colspan="2">FIRE DANGER RATING:</td> </tr> </table>		TEMPERATURE oC	WIND DIRECTION/SPEED KM/HR	RELATIVE HUMIDITY %	RAINFALL SINCE 9AM MM	FIRE DANGER RATING:	
TEMPERATURE oC	WIND DIRECTION/SPEED KM/HR						
RELATIVE HUMIDITY %	RAINFALL SINCE 9AM MM						
FIRE DANGER RATING:							
<p>THE LOCATION OF THE PLACE WHERE POLLUTION IS OCCURING OR IS LIKELY TO OCCUR:</p> <p>.....</p> <p>.....</p> <p>.....</p> <p>.....</p>							
<p>THE NATURE, THE ESTIMATED QUANTITY OR VOLUME AND THE CONCENTRATION OF ANY POLLUTANTS INVOLVED (IF KNOWN):</p> <p>.....</p> <p>.....</p> <p>.....</p> <p>.....</p>							

THE CIRCUMSTANCES IN WHICH THE INCIDENT OCCURRED, INCLUDING THE CAUSE OF THE INCIDENT (IF KNOWN):

.....

.....

.....

.....

THE CORRECTIVE ACTION TAKEN OR PROPOSED TO BE TAKEN TO DEAL WITH THE INCIDENT AND ANY RESULTING POLLUTION OR THREATENED POLLUTION (IF KNOWN):

.....

.....

.....

.....

HAS COUNCIL BEEN NOTIFIED?	YES	NO
HAS ENVIRONMENTAL PROTECTION AUTHORITY (EPA) BEEN NOTIFIED?	YES	NO
HAS NSW MINISTRY OF HEALTH (VIA PUBLIC HEALTH UNITS) BEEN NOTIFIED?	YES	NO
HAS WORKCOVER NSW BEEN NOTIFIED?	YES	NO
HAS LOCAL FIRE AND RESCUE NSW BEEN NOTIFIED?	YES	NO
HAS EPA DIRECTED COUNCIL TO NOTIFY NEIGHBOURS?	YES	NO
IF NOT, HAS COUNCIL VOLUNTARARILY NOTIFIED NEIGHBOURS?	YES	NO

SIGNATURE: DATE:

SIGNATURE: DATE:

DIRECTOR INFRASTRUCTURE & ENGINEERING SERVICES

7.0 PRIMP TESTING AND UPDATING

Testing and updating of the PIRMP				
<p>It is a legal requirement to test the plan every 12 months and within one month of any pollution incident that caused or threatened material harm to the environment.</p> <p>Detail the manner in which the plan is to be tested and maintained to ensure the information included in the plan is accurate and up-to-date and the plan is capable of being implemented in a workable and effective manner:</p> <p>Detail how the testing is documented and recorded (this must include the testing dates and names of all staff members who carried out the testing):</p> <p>Testing is conducted annually with Waste Staff and other key stakeholders. Key findings are reported in the table below.</p>				
PIRMP testing details				
Date tested	Tested by (to include the names of all people involved in testing)	Details of test (e.g. nature of the test, involvement of other agencies) Note: Testing must cover all components of the plan.	Finding of test, including issues identified	Next scheduled testing date (must be within 12 months from current test)
15/6/2024	A Woods A Everett M Slimming C Ebsworth	Review of recent fire at waste depot and discussion.	Test found that the PIRMP needed updating to show a clear traffic plan and accesses to waste depot and also to include updated contact details of neighbours.	June 2025

APPENDICES

Appendix 1: Detailed map of Narromine Waste Management facility



The roads are indicated by the red path outlined in the figure above.

Points shown in the figure above correspond to:

- 1 = Gate that is normally locked
- 2 = Main gate
- 3 = Contractors, shire afterhours access/ emergency access
- 4 = Staff access for transfers
- 5 = Location of fire truck
- 6 = Main site office & Emergency box
- 7 = Emergency assembly point

Appendix 2: Map containing neighbours contact details

